

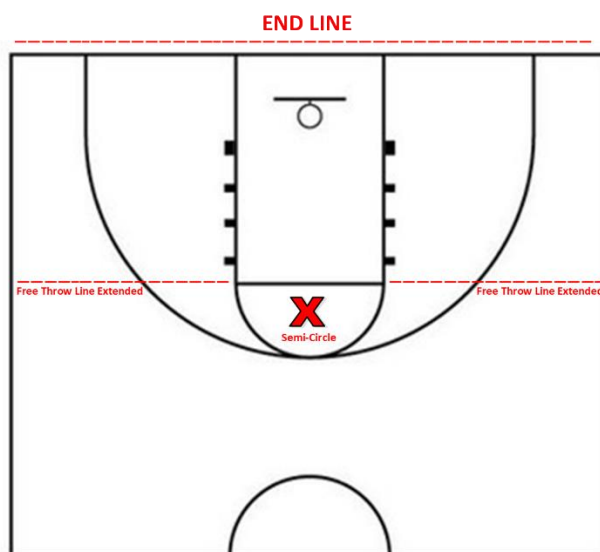
Half Court Basketball

Rule Highlights and Clarity

Special Olympics
Virginia



Below are a few Half Court rule highlights, providing extra clarity.



- Whenever there is a dead ball situation, the ball is **always** put into play inside the semi-circle above the free throw line. The referee should give the ball to an offensive player to signal that the ball is in play. No defenders can be inside the semi-circle. The ball **must** be passed to another player. (A dead ball is when play stops due to the ball going out-of-bounds, a foul, a violation such as traveling, a made shot, or the defensive team making a basket without taking the ball back first.)
- The defensive team **can steal** a ball when it is passed outside of the semi-circle to resume play after a dead ball. If a defender steals the ball by entering the semi-circle, that is a violation and results in a dead ball. The referee then repeats the process of giving the ball to an offensive player to inbound.
- Whenever there is a change of possession (regardless of whether a shot was taken and regardless of whether the ball hit the rim), the defensive team that just got the ball must take the ball back behind the **free throw line extended**. (An imaginary line that extends the free throw line to the sideline.) This can be done by dribbling the ball past the free throw line extended or passing the ball to a teammate behind the free throw line extended. Play continues once the ball is past the free throw line extended, meaning that the player dribbling the ball can continue dribbling towards the basket or the player that received the pass can start dribbling.
- Each basket is worth 2 points. If the court has a 3-point line, **3 point baskets are awarded**.
- **Substitutions** can be made during any dead ball situation. Coaches must notify the referee to make a substitution.
- Coaches **cannot** stand by the end line under the basket. This interferes with the referee's ability to move and see the play. Coaches need to stay near their team bench several feet away from the end line. At state games, coaches must remain on the sideline near their team bench.